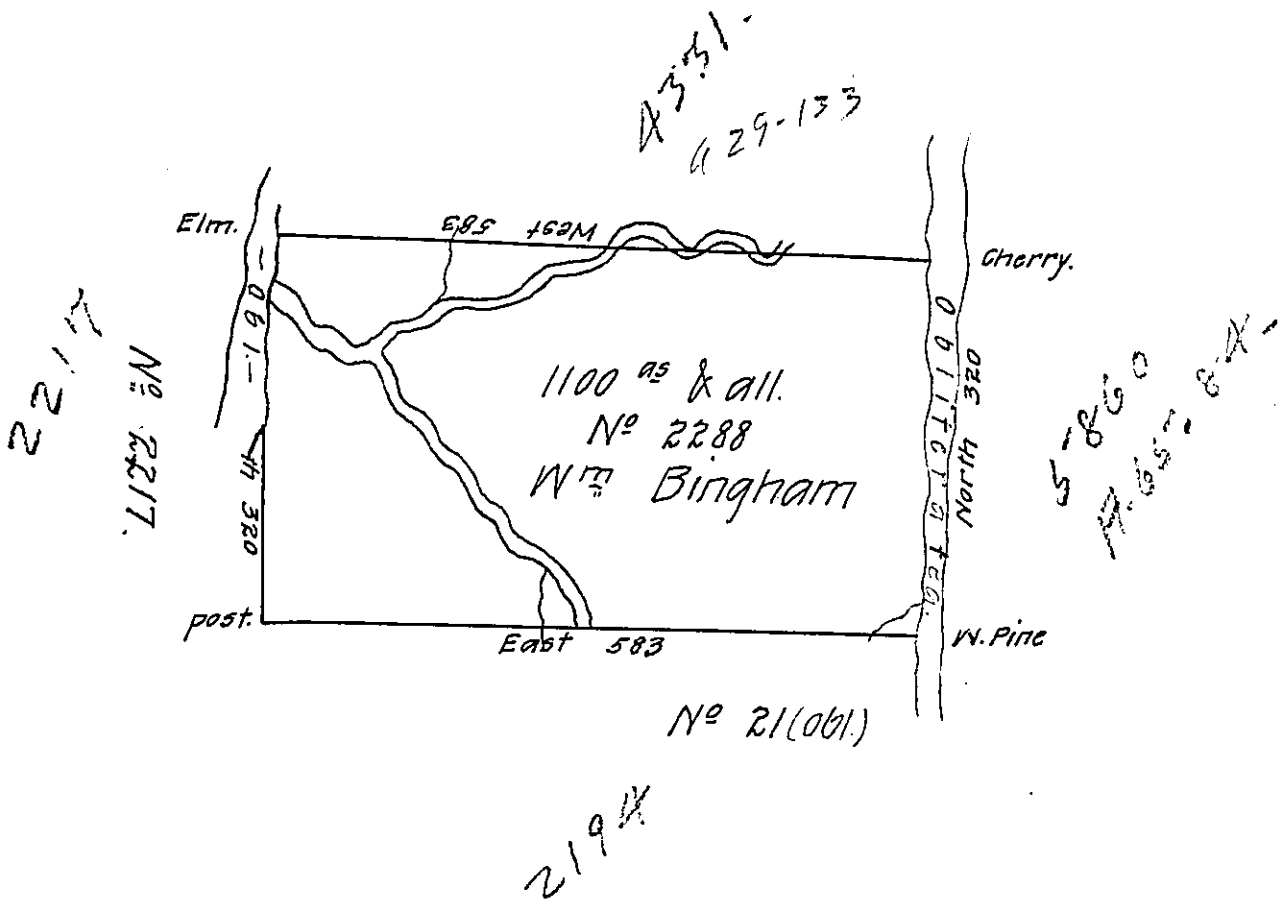


N<sup>o</sup> 64.



Situate on the Oswayo Creek about two Miles south of the State Line in North<sup>d</sup> County containing 1100 Acres and the usual allowance for roads &c.

Surveyed June 20<sup>th</sup> 1793 for William Bingham in pursuance of a warrant N<sup>o</sup> 2288 bearing date 1<sup>st</sup> December 1792.

John Canan. D.S.

Daniel Brodhead Esq. S.G.

IN TESTIMONY that the above is a copy of the original remaining on file in the Department of Internal Affairs of Pennsylvania, made conformably to an Act of Assembly approved the 16th day of February, 1833, I have hereunto set my Hand and caused the Seal of said Department to be affixed at Harrisburg, this twenty-second day of April 1912.

*Henry Houch*

Secretary of Internal Affairs.